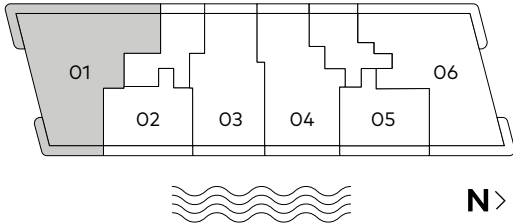
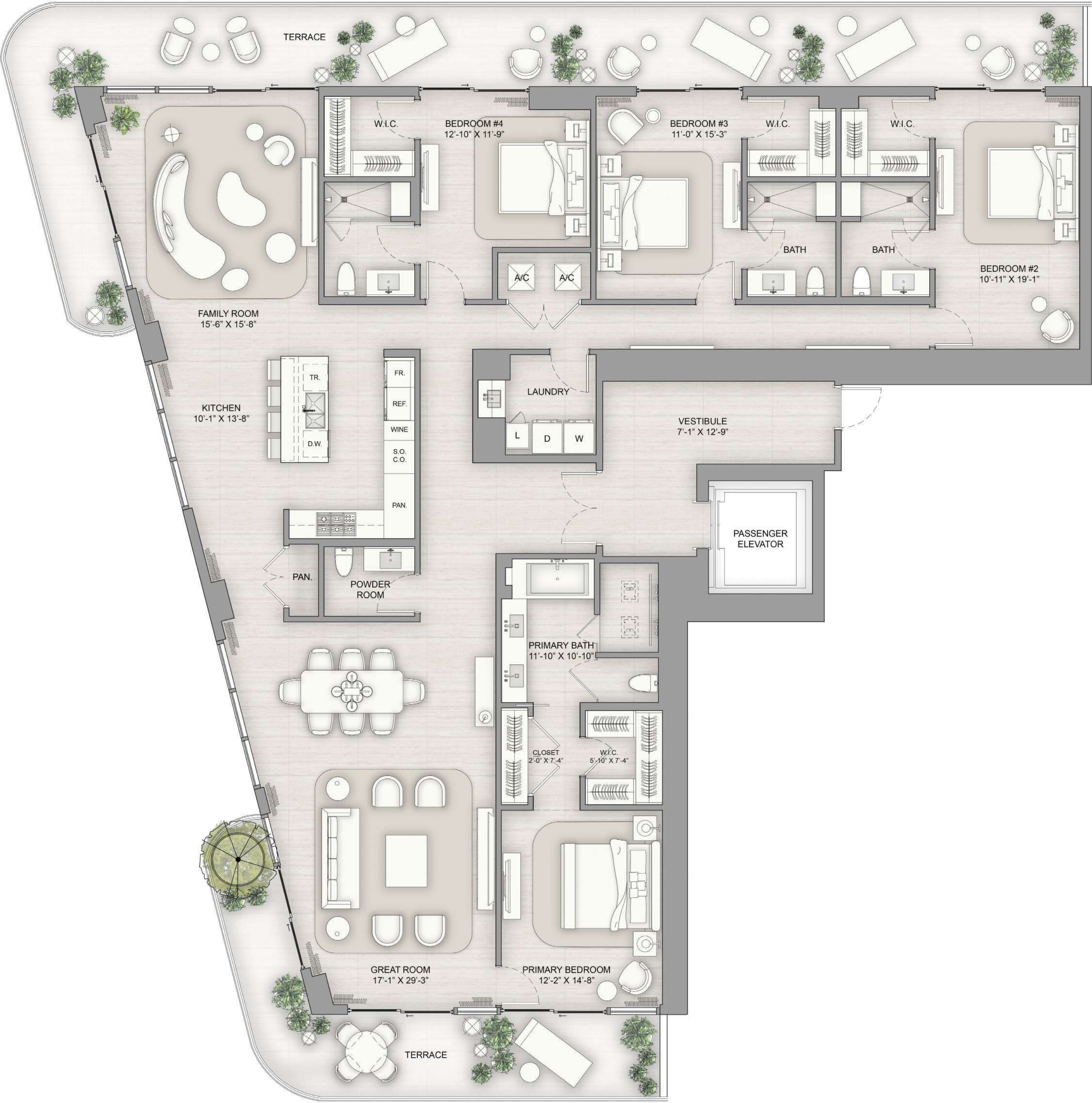


Residence 01

Floors 11 - 27

4 Bedrooms | 4 Bathrooms | 1 Powder Room

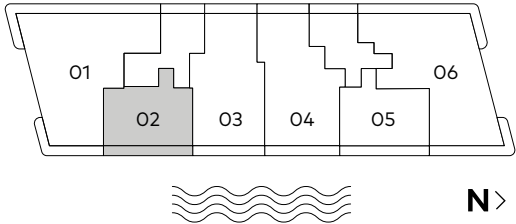
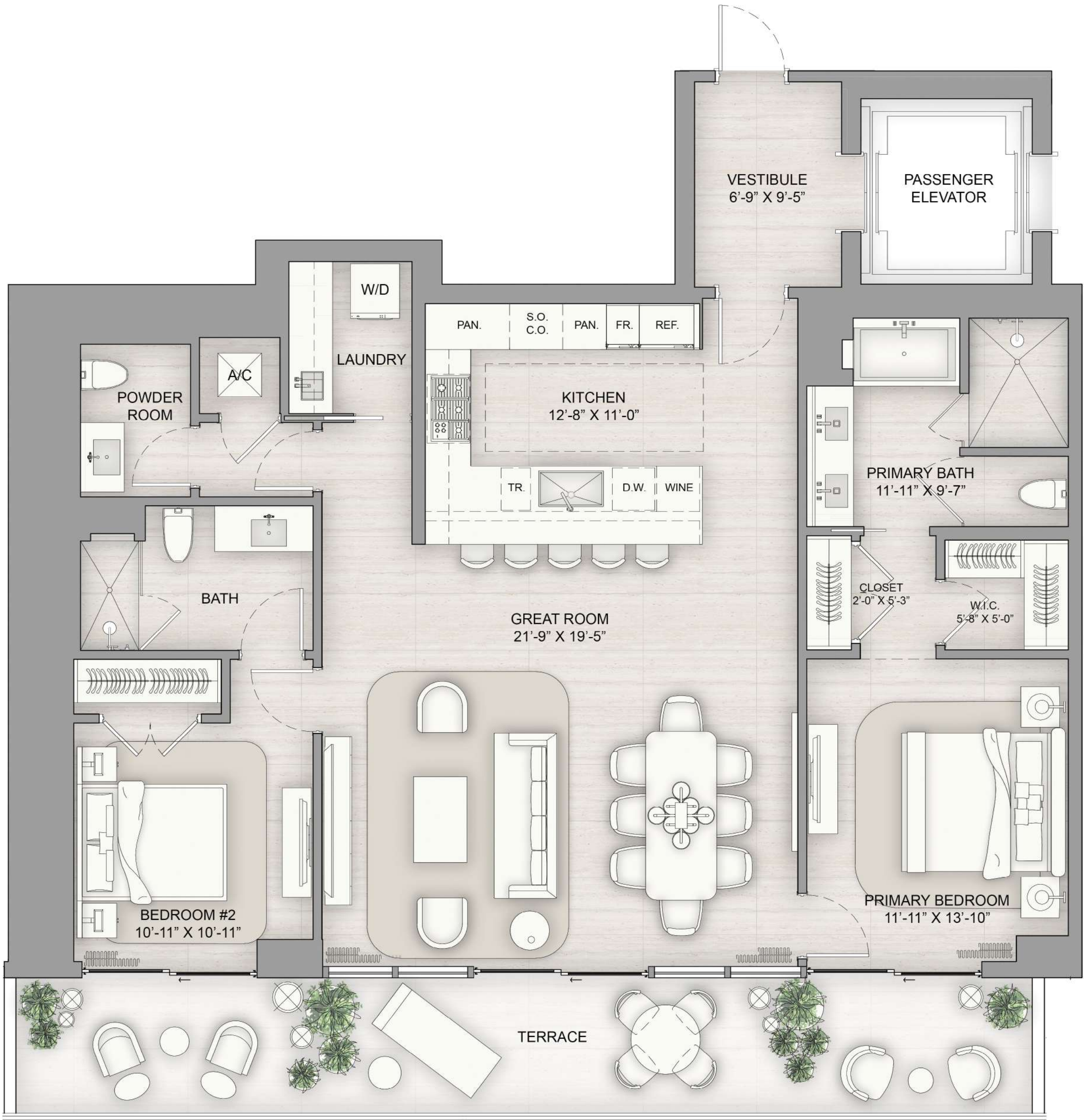
Interior 3,331 SF | Exterior 898 SF | Total Area 4,229 SF



There are various methods for calculating the square footage of a Unit and depending on the method of calculation, the quoted square footage of a Unit in advertising materials may vary from the square footage of a Unit as described in the Prospectus and the Declaration. The dimensions of the Unit shown have been calculated from the exterior boundaries of the exterior walls to the centerline of interior demising walls, including common elements such as structural walls and other interior structural components of the building which method results in a calculation of square footage greater than if measured in other customary methods, such as from finished painted surface to finished painted surface as an example. All dimensions are approximate and may vary with actual construction. All floor plans are subject to change. The furnishings and décor illustrated are not placed in a manner intended to guaranty a particular use of the space and are not included with the purchase of the Unit. Consult the Developer's Prospectus for information regarding terms, conditions, the calculation of the Unit dimensions and to learn what is included with purchase. Marriott International, Inc. The Related Group, and BH Group are Licensors of the Developer. 1717 N Flagler Drive Venture, LLC Ritz-Carlton® is the registered mark of Marriott International, Inc. 2024© 1717 N Flagler Drive Venture, LLC.

Residence 02

Floors 11 - 27
2 Bedrooms | 2 Bathrooms | 1 Powder Room
Interior 1,566 SF | Exterior 302 SF | Total Area 1,868 SF



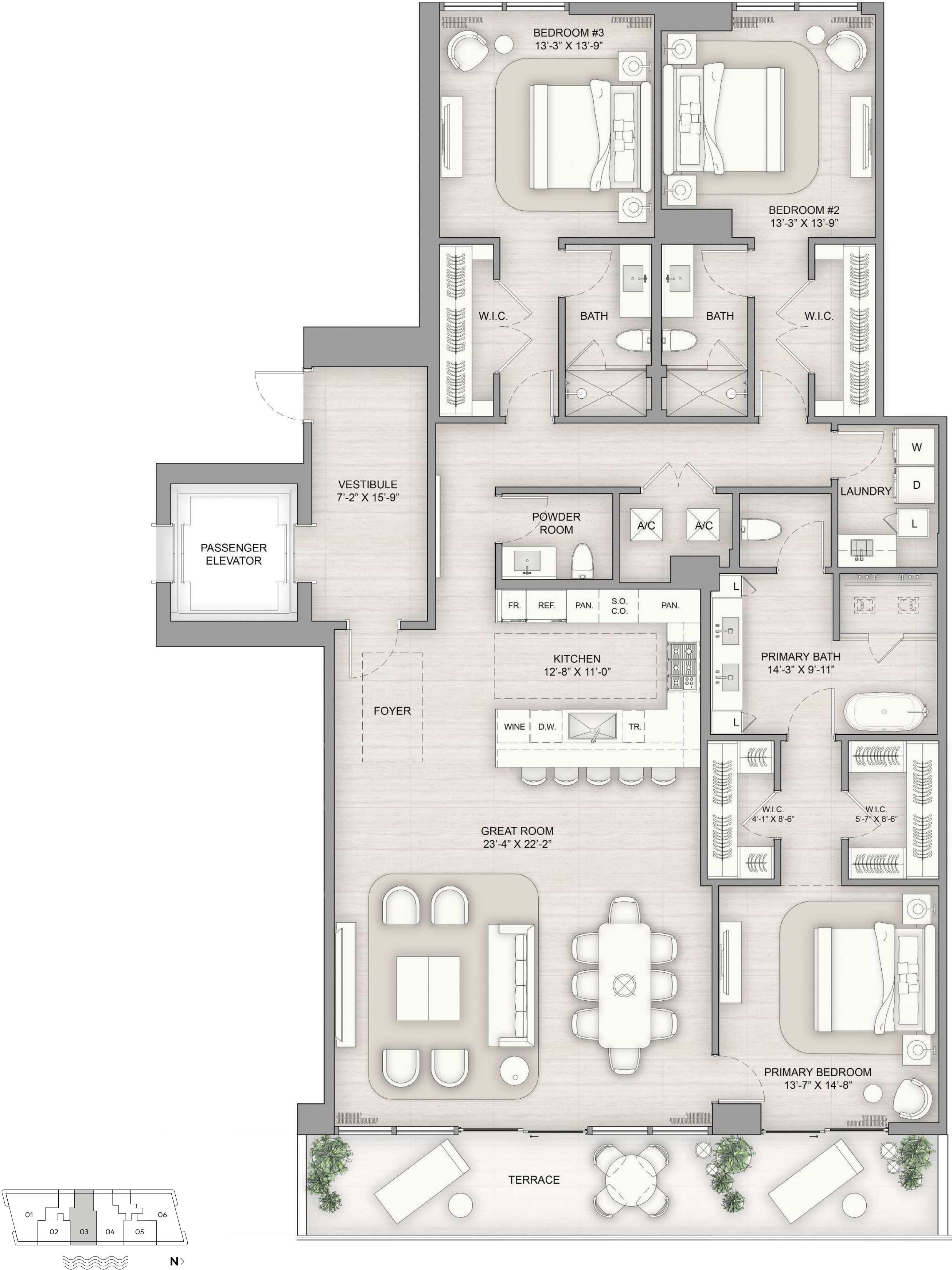
There are various methods for calculating the square footage of a Unit and depending on the method of calculation, the quoted square footage of a Unit in advertising materials may vary from the square footage of a Unit as described in the Prospectus and the Declaration. The dimensions of the Unit shown have been calculated from the exterior boundaries of the exterior walls to the centerline of interior demising walls, including common elements such as structural walls and other interior structural components of the building which method results in a calculation of square footage greater than if measured in other customary methods, such as from finished painted surface to finished painted surface as an example. All dimensions are approximate and may vary with actual construction. All floor plans are subject to change. The furnishings and décor illustrated are not placed in a manner intended to guaranty a particular use of the space and are not included with the purchase of the Unit. Consult the Developer's Prospectus for information regarding terms, conditions, the calculation of the Unit dimensions and to learn what is included with purchase. Marriott International, Inc. The Related Group, and BH Group are Licensors of the Developer. 1717 N Flagler Drive Venture, LLC Ritz-Carlton® is the registered mark of Marriott International, Inc. 2024© 1717 N Flagler Drive Venture, LLC.

Residence 03

Floors 11 - 27

3 Bedrooms | 3 Bathrooms | 1 Powder Room

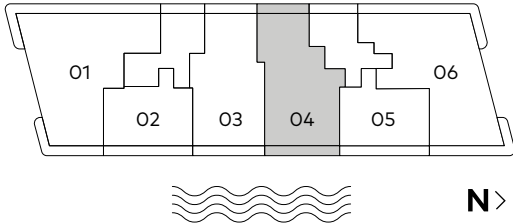
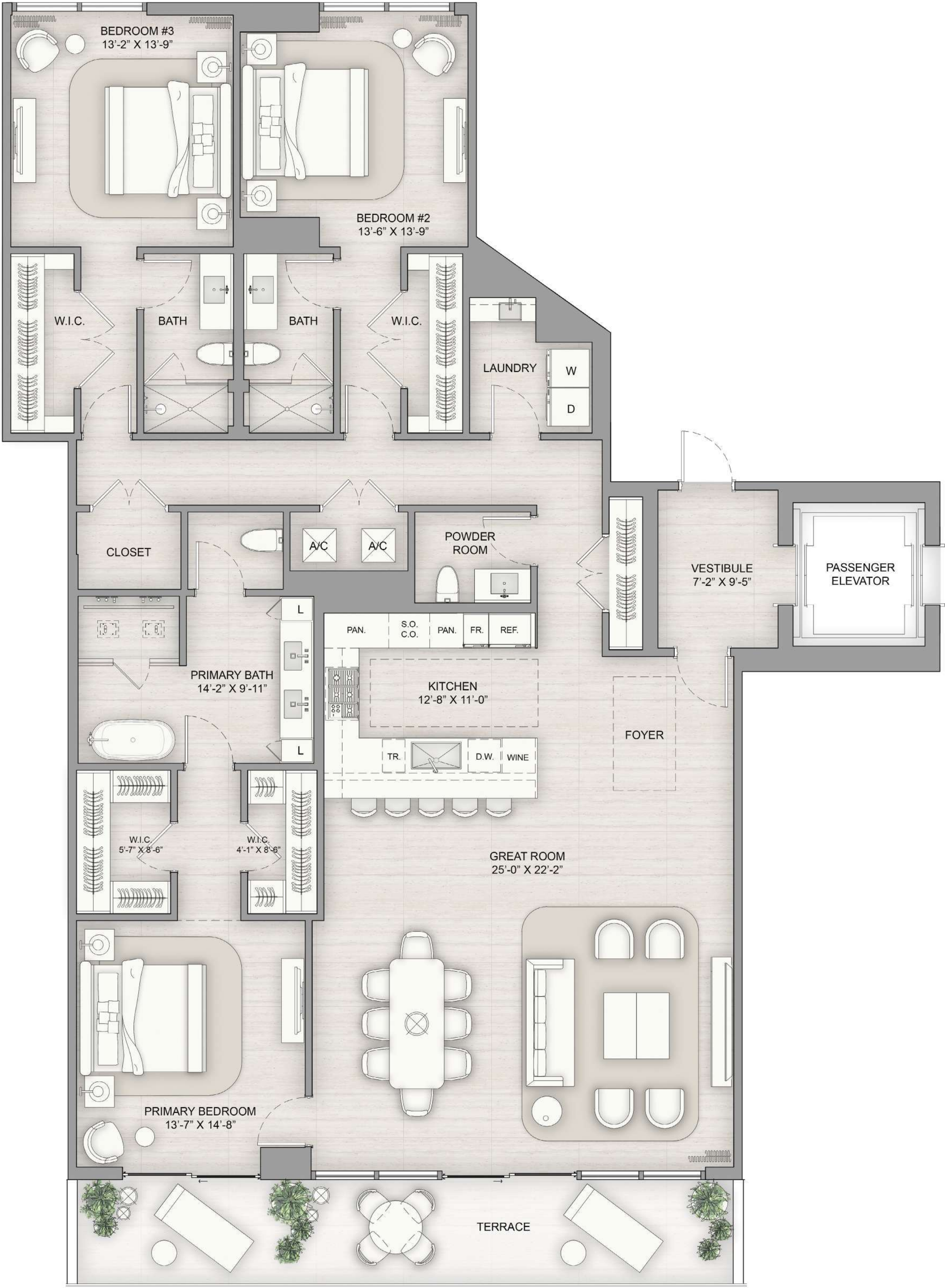
Interior 2,449 SF | Exterior 257 SF | Total Area 2,706 SF



There are various methods for calculating the square footage of a Unit and depending on the method of calculation, the quoted square footage of a Unit in advertising materials may vary from the square footage of a Unit as described in the Prospectus and the Declaration. The dimensions of the Unit shown have been calculated from the exterior boundaries of the exterior walls to the centerline of interior demising walls, including common elements such as structural walls and other interior structural components of the building which method results in a calculation of square footage greater than if measured in other customary methods, such as from finished painted surface to finished painted surface as an example. All dimensions are approximate and may vary with actual construction. All floor plans are subject to change. The furnishings and décor illustrated are not placed in a manner intended to guaranty a particular use of the space and are not included with the purchase of the Unit. Consult the Developer's Prospectus for information regarding terms, conditions, the calculation of the Unit dimensions and to learn what is included with purchase. Marriott International, Inc. The Related Group, and BH Group are Licensors of the Developer. 1717 N Flagler Drive Venture, LLC Ritz-Carlton® is the registered mark of Marriott International, Inc. 2024© 1717 N Flagler Drive Venture, LLC.®

Residence 04

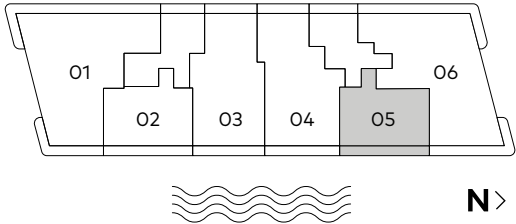
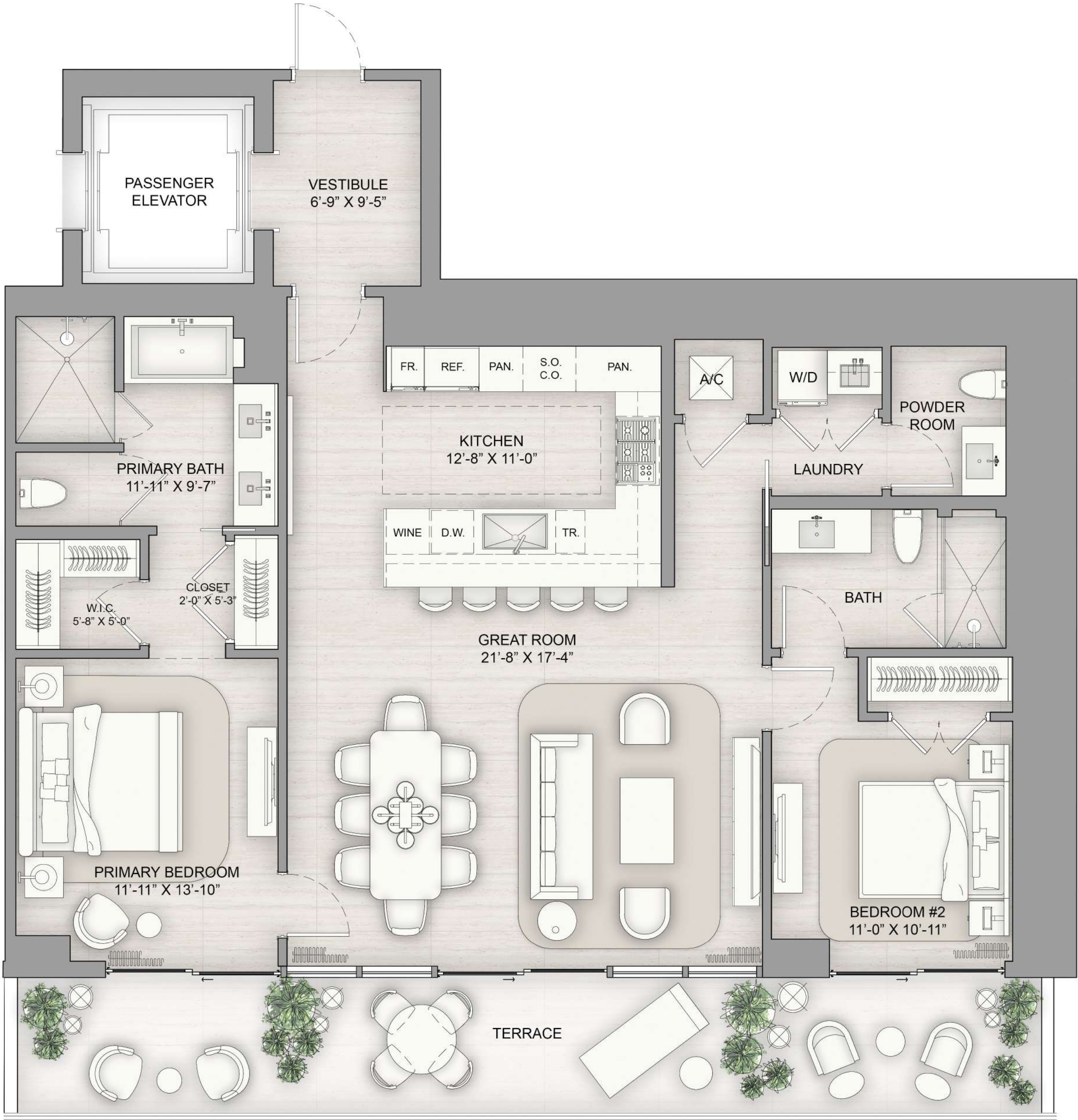
Floors 11 - 27
3 Bedrooms | 3 Bathrooms | 1 Powder Room
Interior 2,541 SF | Exterior 257 SF | Total Area 2,798 SF



There are various methods for calculating the square footage of a Unit and depending on the method of calculation, the quoted square footage of a Unit in advertising materials may vary from the square footage of a Unit as described in the Prospectus and the Declaration. The dimensions of the Unit shown have been calculated from the exterior boundaries of the exterior walls to the centerline of interior demising walls, including common elements such as structural walls and other interior structural components of the building which method results in a calculation of square footage greater than if measured in other customary methods, such as from finished painted surface to finished painted surface as an example. All dimensions are approximate and may vary with actual construction. All floor plans are subject to change. The furnishings and décor illustrated are not placed in a manner intended to guaranty a particular use of the space and are not included with the purchase of the Unit. Consult the Developer's Prospectus for information regarding terms, conditions, the calculation of the Unit dimensions and to learn what is included with purchase. Marriott International, Inc. The Related Group, and BH Group are Licensors of the Developer. 1717 N Flagler Drive Venture, LLC Ritz-Carlton® is the registered mark of Marriott International, Inc. 2024© 1717 N Flagler Drive Venture, LLC.

Residence 05

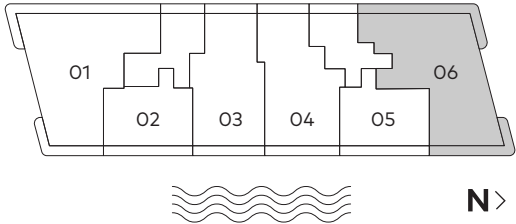
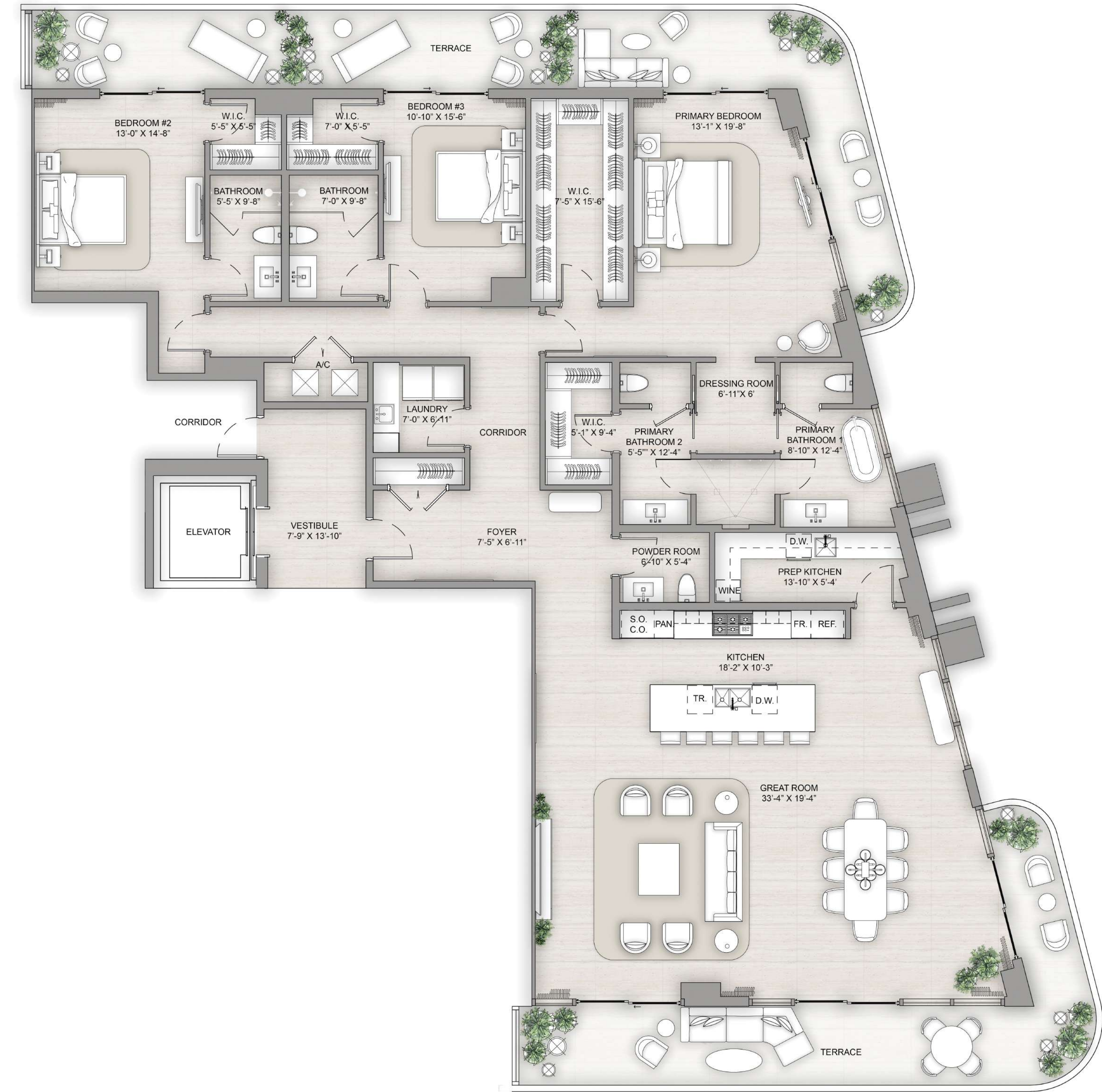
Floors 11 - 27
2 Bedrooms | 2 Bathrooms | 1 Powder Room
Interior 1,532 SF | Exterior 307 SF | Total Area 1,839 SF



There are various methods for calculating the square footage of a Unit and depending on the method of calculation, the quoted square footage of a Unit in advertising materials may vary from the square footage of a Unit as described in the Prospectus and the Declaration. The dimensions of the Unit shown have been calculated from the exterior boundaries of the exterior walls to the centerline of interior demising walls, including common elements such as structural walls and other interior structural components of the building which method results in a calculation of square footage greater than if measured in other customary methods, such as from finished painted surface to finished painted surface as an example. All dimensions are approximate and may vary with actual construction. All floor plans are subject to change. The furnishings and décor illustrated are not placed in a manner intended to guaranty a particular use of the space and are not included with the purchase of the Unit. Consult the Developer's Prospectus for information regarding terms, conditions, the calculation of the Unit dimensions and to learn what is included with purchase. Marriott International, Inc. The Related Group, and BH Group are Licensors of the Developer. 1717 N Flagler Drive Venture, LLC Ritz-Carlton® is the registered mark of Marriott International, Inc. 2024© 1717 N Flagler Drive Venture, LLC.

Residence 06

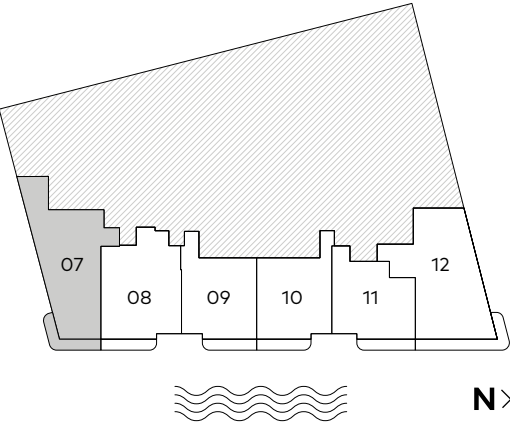
Floors 11 - 27
3 Bedrooms | 3 Bathrooms | 1 Powder Room
Interior 3,244 SF | Exterior 897 SF | Total Area 4,141 SF



There are various methods for calculating the square footage of a Unit and depending on the method of calculation, the quoted square footage of a Unit in advertising materials may vary from the square footage of a Unit as described in the Prospectus and the Declaration. The dimensions of the Unit shown have been calculated from the exterior boundaries of the exterior walls to the centerline of interior demising walls, including common elements such as structural walls and other interior structural components of the building which method results in a calculation of square footage greater than if measured in other customary methods, such as from finished painted surface to finished painted surface as an example. All dimensions are approximate and may vary with actual construction. All floor plans are subject to change. The furnishings and décor illustrated are not placed in a manner intended to guaranty a particular use of the space and are not included with the purchase of the Unit. Consult the Developer's Prospectus for information regarding terms, conditions, the calculation of the Unit dimensions and to learn what is included with purchase. Marriott International, Inc. The Related Group, and BH Group are Licensors of the Developer. 1717 N Flagler Drive Venture, LLC Ritz-Carlton® is the registered mark of Marriott International, Inc. 2025© 1717 N Flagler Drive Venture, LLC.

Lake Home 07

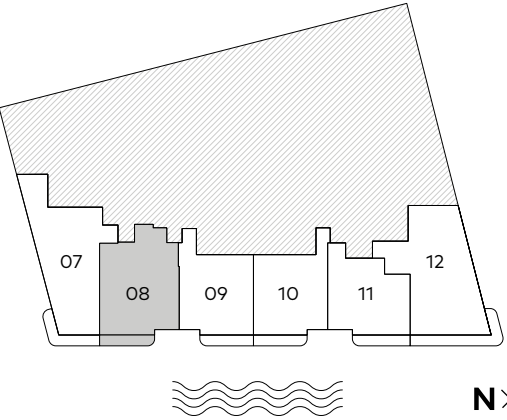
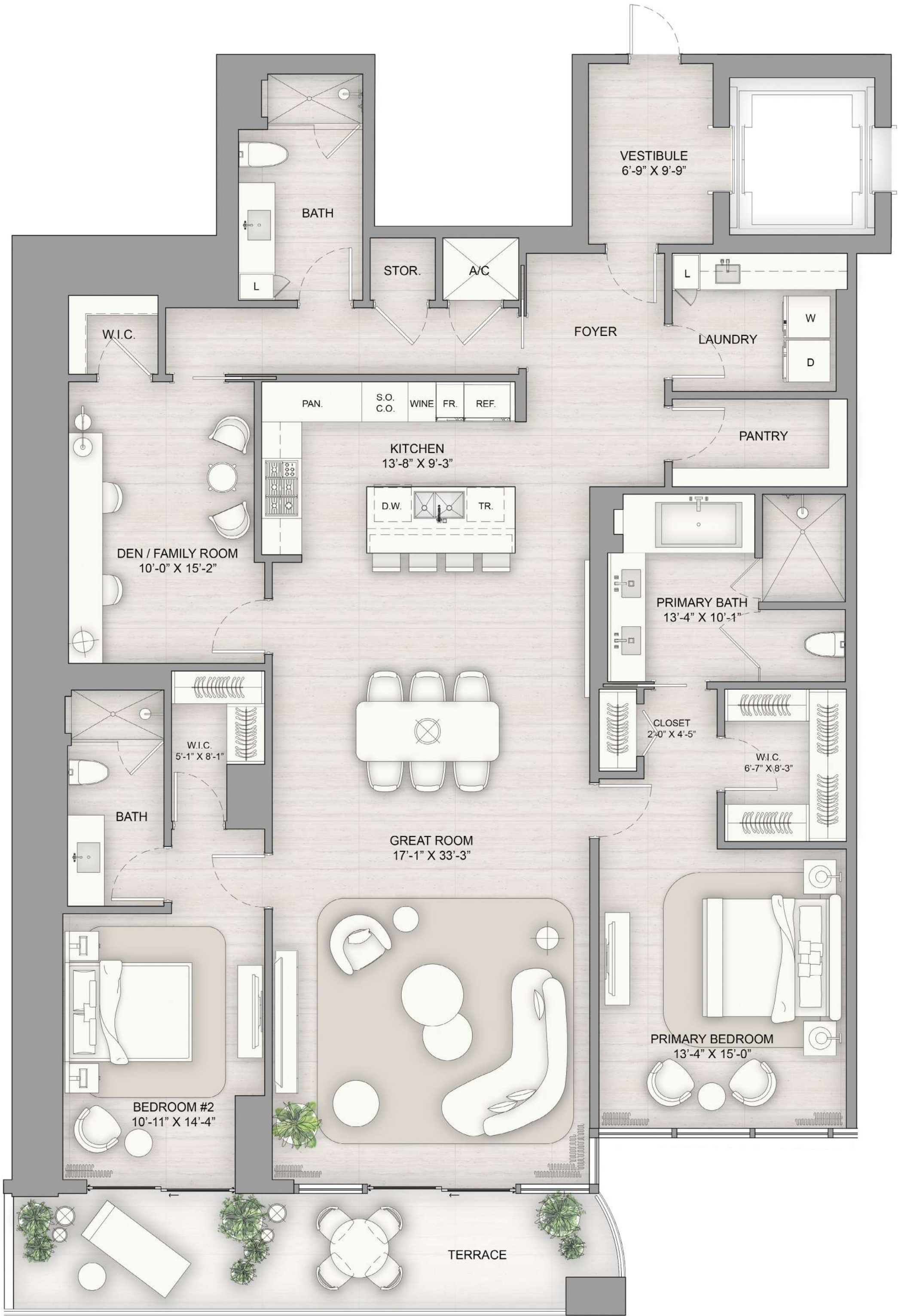
Floors 2 - 8
2 Bedrooms | 2 Bathrooms | 1 Powder Room
Interior 2,510 SF | Exterior 240 SF | Total Area 2,750 SF



There are various methods for calculating the square footage of a Unit and depending on the method of calculation, the quoted square footage of a Unit in advertising materials may vary from the square footage of a Unit as described in the Prospectus and the Declaration. The dimensions of the Unit shown have been calculated from the exterior boundaries of the exterior walls to the centerline of interior demising walls, including common elements such as structural walls and other interior structural components of the building which method results in a calculation of square footage greater than if measured in other customary methods, such as from finished painted surface to finished painted surface as an example. All dimensions are approximate and may vary with actual construction. All floor plans are subject to change. The furnishings and décor illustrated are not placed in a manner intended to guaranty a particular use of the space and are not included with the purchase of the Unit. Consult the Developer's Prospectus for information regarding terms, conditions, the calculation of the Unit dimensions and to learn what is included with purchase. Marriott International, Inc. The Related Group, and BH Group are Licensors of the Developer. 1717 N Flagler Drive Venture, LLC Ritz-Carlton® is the registered mark of Marriott International, Inc. 2024© 1717 N Flagler Drive Venture, LLC.

Lake Home 08

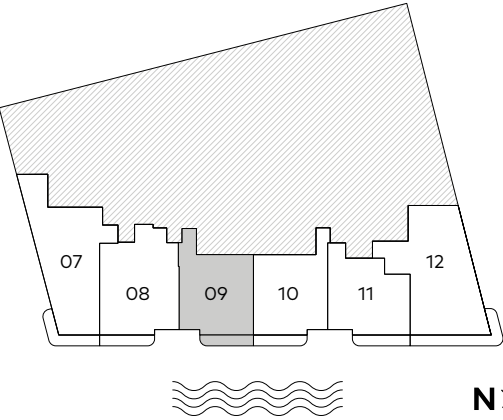
Floors 2 - 8
2 Bedrooms | 3 Bathrooms
Interior 2,350 SF | Exterior 193 SF | Total Area 2,543 SF



There are various methods for calculating the square footage of a Unit and depending on the method of calculation, the quoted square footage of a Unit in advertising materials may vary from the square footage of a Unit as described in the Prospectus and the Declaration. The dimensions of the Unit shown have been calculated from the exterior boundaries of the exterior walls to the centerline of interior demising walls, including common elements such as structural walls and other interior structural components of the building which method results in a calculation of square footage greater than if measured in other customary methods, such as from finished painted surface to finished painted surface as an example. All dimensions are approximate and may vary with actual construction. All floor plans are subject to change. The furnishings and décor illustrated are not placed in a manner intended to guaranty a particular use of the space and are not included with the purchase of the Unit. Consult the Developer's Prospectus for information regarding terms, conditions, the calculation of the Unit dimensions and to learn what is included with purchase. Marriott International, Inc. The Related Group, and BH Group are Licensors of the Developer. 1717 N Flagler Drive Venture, LLC Ritz-Carlton® is the registered mark of Marriott International, Inc. 2024© 1717 N Flagler Drive Venture, LLC.

Lake Home 09

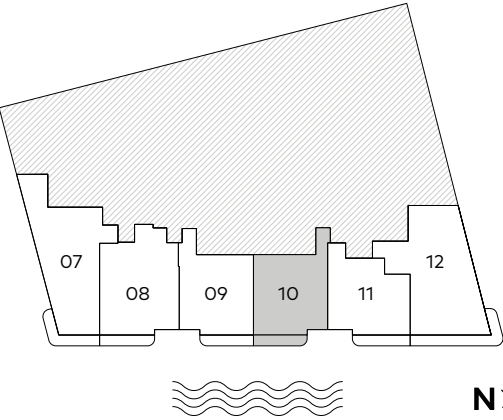
Floors 2 - 8
2 Bedrooms | 2 Bathrooms | 1 Powder Room
Interior 1,929 SF | Exterior 188 SF | Total Area 2,117 SF



There are various methods for calculating the square footage of a Unit and depending on the method of calculation, the quoted square footage of a Unit in advertising materials may vary from the square footage of a Unit as described in the Prospectus and the Declaration. The dimensions of the Unit shown have been calculated from the exterior boundaries of the exterior walls to the centerline of interior demising walls, including common elements such as structural walls and other interior structural components of the building which method results in a calculation of square footage greater than if measured in other customary methods, such as from finished painted surface to finished painted surface as an example. All dimensions are approximate and may vary with actual construction. All floor plans are subject to change. The furnishings and décor illustrated are not placed in a manner intended to guaranty a particular use of the space and are not included with the purchase of the Unit. Consult the Developer's Prospectus for information regarding terms, conditions, the calculation of the Unit dimensions and to learn what is included with purchase. Marriott International, Inc. The Related Group, and BH Group are Licensors of the Developer. 1717 N Flagler Drive Venture, LLC Ritz-Carlton® is the registered mark of Marriott International, Inc. 2024© 1717 N Flagler Drive Venture, LLC.

Lake Home 10

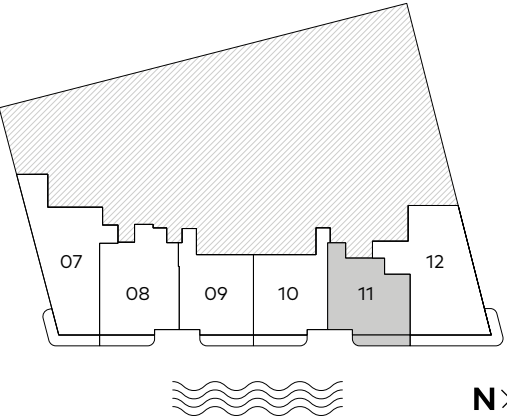
Floors 2 - 8
2 Bedrooms | 2 Bathrooms | 1 Powder Room
Interior 1,929 SF | Exterior 188 SF | Total Area 2,117 SF



There are various methods for calculating the square footage of a Unit and depending on the method of calculation, the quoted square footage of a Unit in advertising materials may vary from the square footage of a Unit as described in the Prospectus and the Declaration. The dimensions of the Unit shown have been calculated from the exterior boundaries of the exterior walls to the centerline of interior demising walls, including common elements such as structural walls and other interior structural components of the building which method results in a calculation of square footage greater than if measured in other customary methods, such as from finished painted surface to finished painted surface as an example. All dimensions are approximate and may vary with actual construction. All floor plans are subject to change. The furnishings and décor illustrated are not placed in a manner intended to guaranty a particular use of the space and are not included with the purchase of the Unit. Consult the Developer's Prospectus for information regarding terms, conditions, the calculation of the Unit dimensions and to learn what is included with purchase. Marriott International, Inc. The Related Group, and BH Group are Licensors of the Developer. 1717 N Flagler Drive Venture, LLC Ritz-Carlton® is the registered mark of Marriott International, Inc. 2024© 1717 N Flagler Drive Venture, LLC.

Lake Home 11

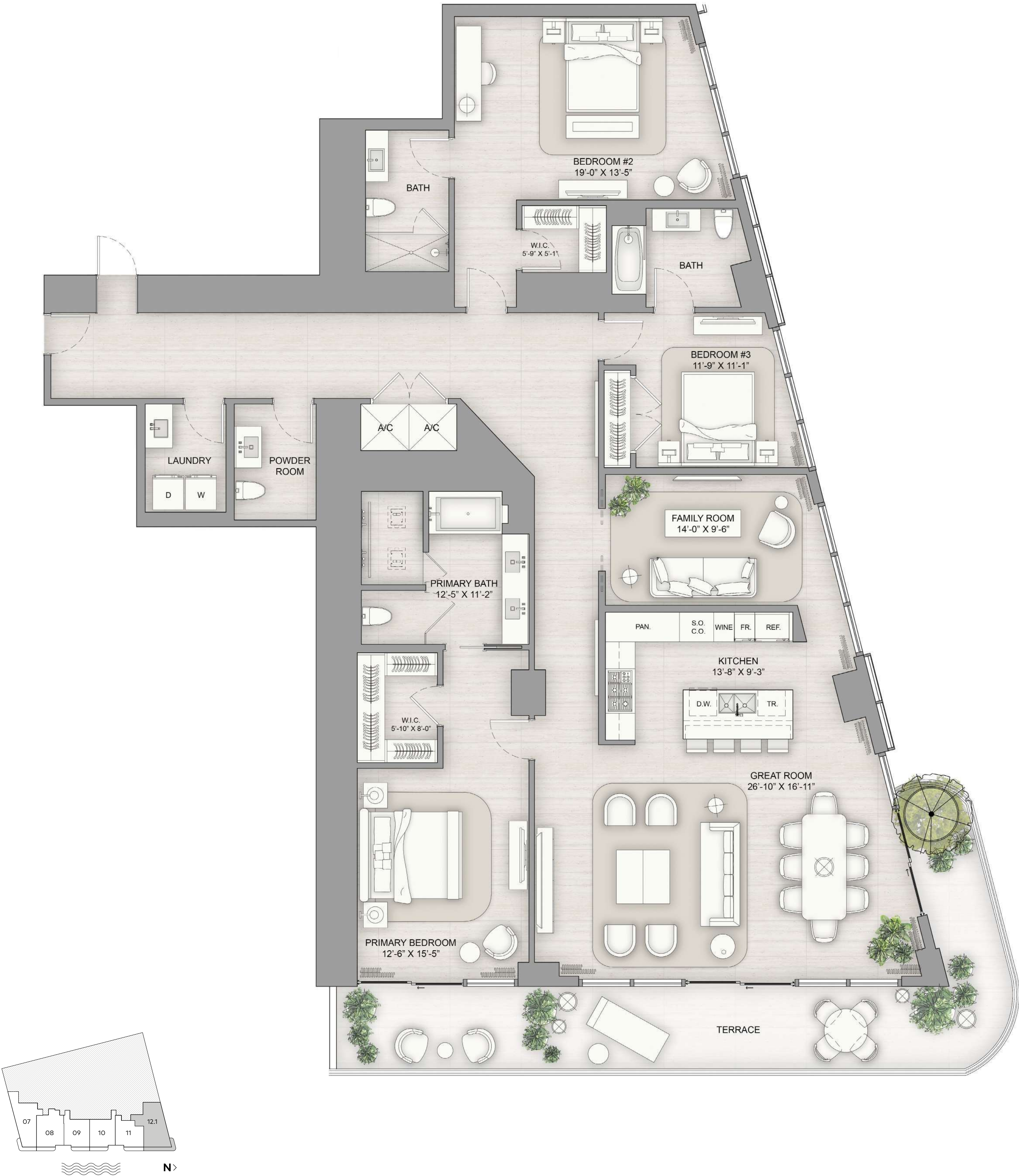
Floors 2 - 8
2 Bedrooms | 2 Bathrooms | 1 Powder Room
Interior 1,874 SF | Exterior 204 SF | Total Area 2,078 SF



There are various methods for calculating the square footage of a Unit and depending on the method of calculation, the quoted square footage of a Unit in advertising materials may vary from the square footage of a Unit as described in the Prospectus and the Declaration. The dimensions of the Unit shown have been calculated from the exterior boundaries of the exterior walls to the centerline of interior demising walls, including common elements such as structural walls and other interior structural components of the building which method results in a calculation of square footage greater than if measured in other customary methods, such as from finished painted surface to finished painted surface as an example. All dimensions are approximate and may vary with actual construction. All floor plans are subject to change. The furnishings and décor illustrated are not placed in a manner intended to guaranty a particular use of the space and are not included with the purchase of the Unit. Consult the Developer's Prospectus for information regarding terms, conditions, the calculation of the Unit dimensions and to learn what is included with purchase. Marriott International, Inc. The Related Group, and BH Group are Licensors of the Developer. 1717 N Flagler Drive Venture, LLC Ritz-Carlton® is the registered mark of Marriott International, Inc. 2024© 1717 N Flagler Drive Venture, LLC.

Lake Home 12.1

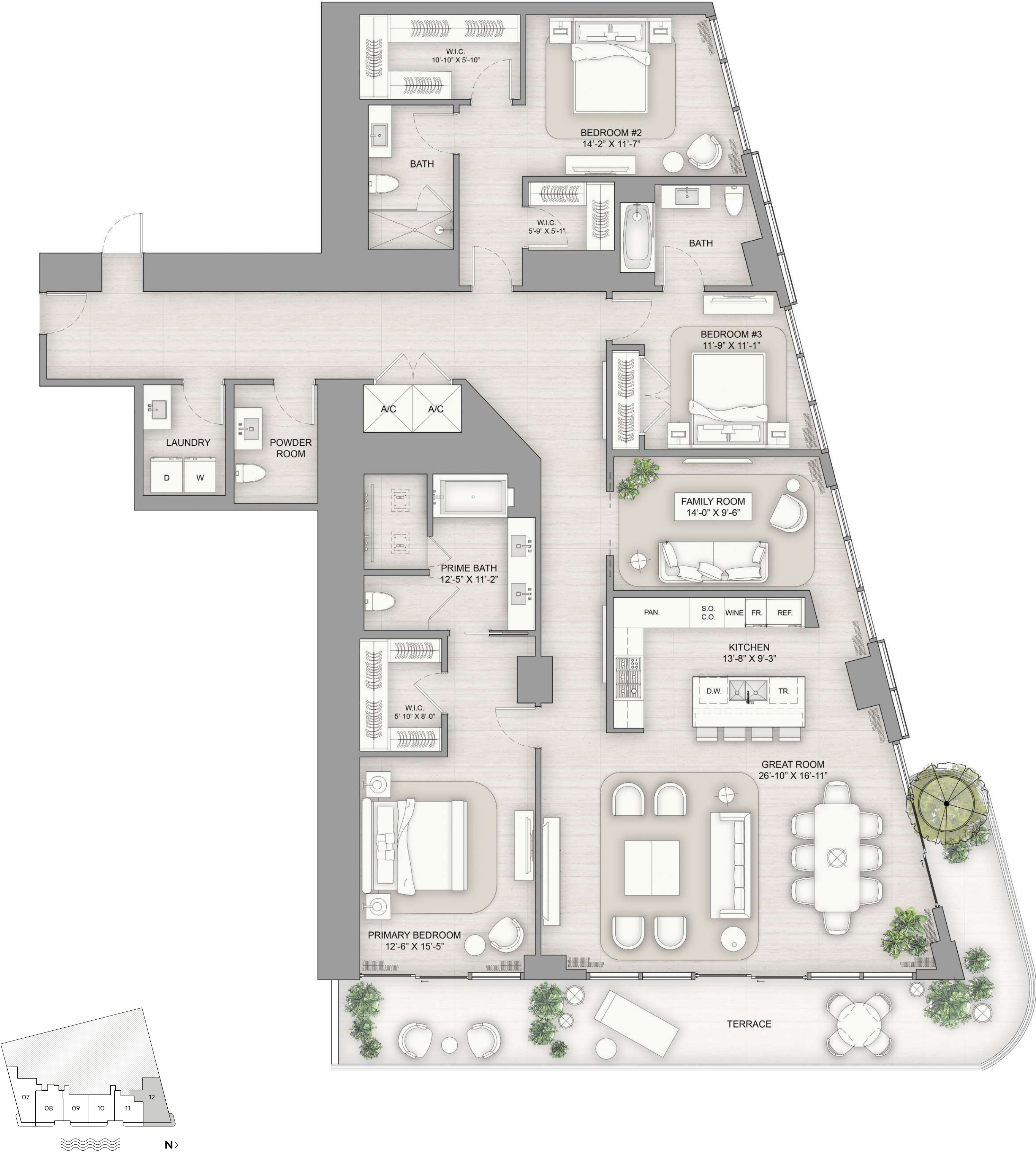
Floor 2
3 Bedrooms | 3 Bathrooms | 1 Powder Room
Interior 2,771 SF | Exterior 393 SF | Total Area 3,164 SF



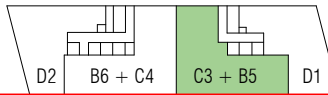
There are various methods for calculating the square footage of a Unit and depending on the method of calculation, the quoted square footage of a Unit in advertising materials may vary from the square footage of a Unit as described in the Prospectus and the Declaration. The dimensions of the Unit shown have been calculated from the exterior boundaries of the exterior walls to the centerline of interior demising walls, including common elements such as structural walls and other interior structural components of the building which method results in a calculation of square footage greater than if measured in other customary methods, such as from finished painted surface to finished painted surface as an example. All dimensions are approximate and may vary with actual construction. All floor plans are subject to change. The furnishings and décor illustrated are not placed in a manner intended to guaranty a particular use of the space and are not included with the purchase of the Unit. Consult the Developer's Prospectus for information regarding terms, conditions, the calculation of the Unit dimensions and to learn what is included with purchase. Marriott International, Inc. The Related Group, and BH Group are Licensors of the Developer. 1717 N Flagler Drive Venture, LLC Ritz-Carlton® is the registered mark of Marriott International, Inc. 2024© 1717 N Flagler Drive Venture, LLC.

Lake Home 12

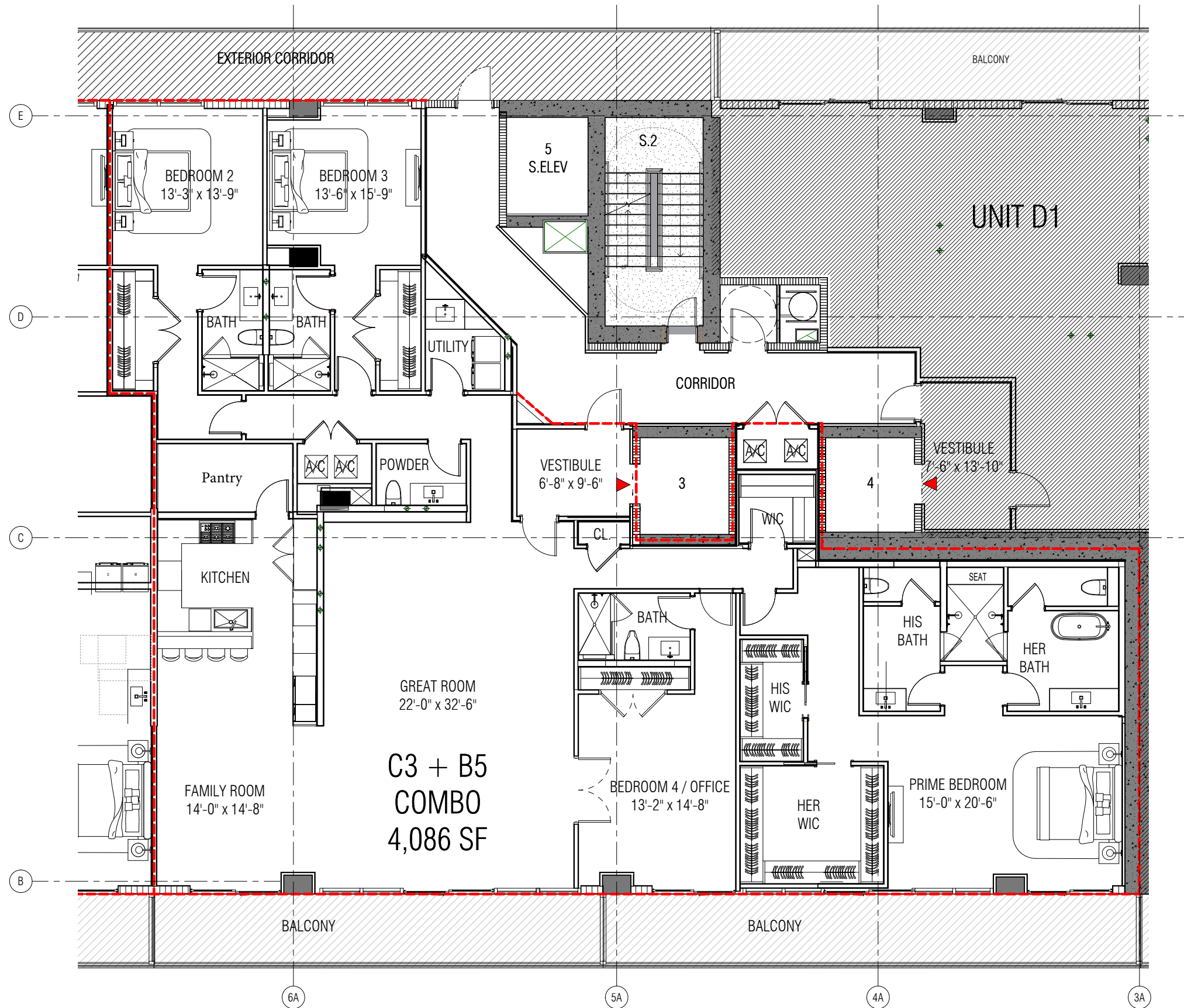
Floors 3 - 8
3 Bedrooms | 3 Bathrooms | 1 Powder Room
Interior 2,777 SF | Exterior 393 SF | Total Area 3,170 SF



There are various methods for calculating the square footage of a Unit and depending on the method of calculation, the quoted square footage of a Unit in advertising materials may vary from the square footage of a Unit as described in the Prospectus and the Declaration. The dimensions of the Unit shown have been calculated from the exterior boundaries of the exterior walls to the centerline of interior demising walls, including common elements such as structural walls and other interior structural components of the building which method results in a calculation of square footage greater than if measured in other customary methods, such as from finished painted surface to finished painted surface as an example. All dimensions are approximate and may vary with actual construction. All floor plans are subject to change. The furnishings and décor illustrated are not placed in a manner intended to guaranty a particular use of the space and are not included with the purchase of the Unit. Consult the Developer's Prospectus for information regarding terms, conditions, the calculation of the Unit dimensions and to learn what is included with purchase. Marriott International, Inc. The Related Group, and BH Group are Licensors of the Developer. 1717 N Flagler Drive Venture, LLC Ritz-Carlton® is the registered mark of Marriott International, Inc. 2024© 1717 N Flagler Drive Venture, LLC.



TOWER LEVEL 14



1 LEVEL 14 COMBO UNITS - C3+B5
1/4" = 1'-0"

